

**U. S. SURVEY**  
**No. 490I, ALASKA**  
**TRACTS "A" THROUGH "D"**  
**IN THREE SHEETS**  
 FOR DETAILS OF SUBDIVISION OF TRACT "A"  
 SEE SHEETS 2 & 3

SITUATED  
 AT THE VILLAGE  
 OF ENGLISH BAY, ALASKA  
 WITH TRACTS A THROUGH C  
 COMPRISING THE TOWNSITE  
 OF ENGLISH BAY  
 AND  
 THE DEPENDENT RESURVEY OF U. S. SURVEY NO. 3883;  
 LINE 3-4, LOT 4, U. S. SURVEY NO. 4772;  
 AND  
 LINE 2-3, LOT 3, U. S. SURVEY NO. 4776

GEODETTIC POSITION  
 AT WITNESS MEANDER CORNER NO. 11, TRACT A  
 LATITUDE 59°21'07.29" N., LONGITUDE 151°54'56.43" W.

AREA: 119.68 ACRES

SURVEYED BY:  
 MASON W. THAYER, SUPERVISORY CADASTRAL SURVEYOR  
 JULY 8, 1967, TO AUGUST 12, 1967  
 Under Special Instructions  
 Dated June 8, 1967  
 Approved June 9, 1967

UNITED STATES DEPARTMENT OF THE INTERIOR  
 BUREAU OF LAND MANAGEMENT  
 Washington, D. C.      April 1, 1971

This plat is strictly conformable to the approved field notes, and the survey, having been correctly executed in accordance with the requirements of law and the regulations of this Bureau, is hereby accepted.

For the Director  
*Clark F. Lumm*  
 Chief, Division of Cadastral Survey

U. S. SURVEY  
No. 4901, ALASKA  
TOWNSITE OF ENGLISH BAY

Reference should be made to Sheet No. 1,  
for survey information.

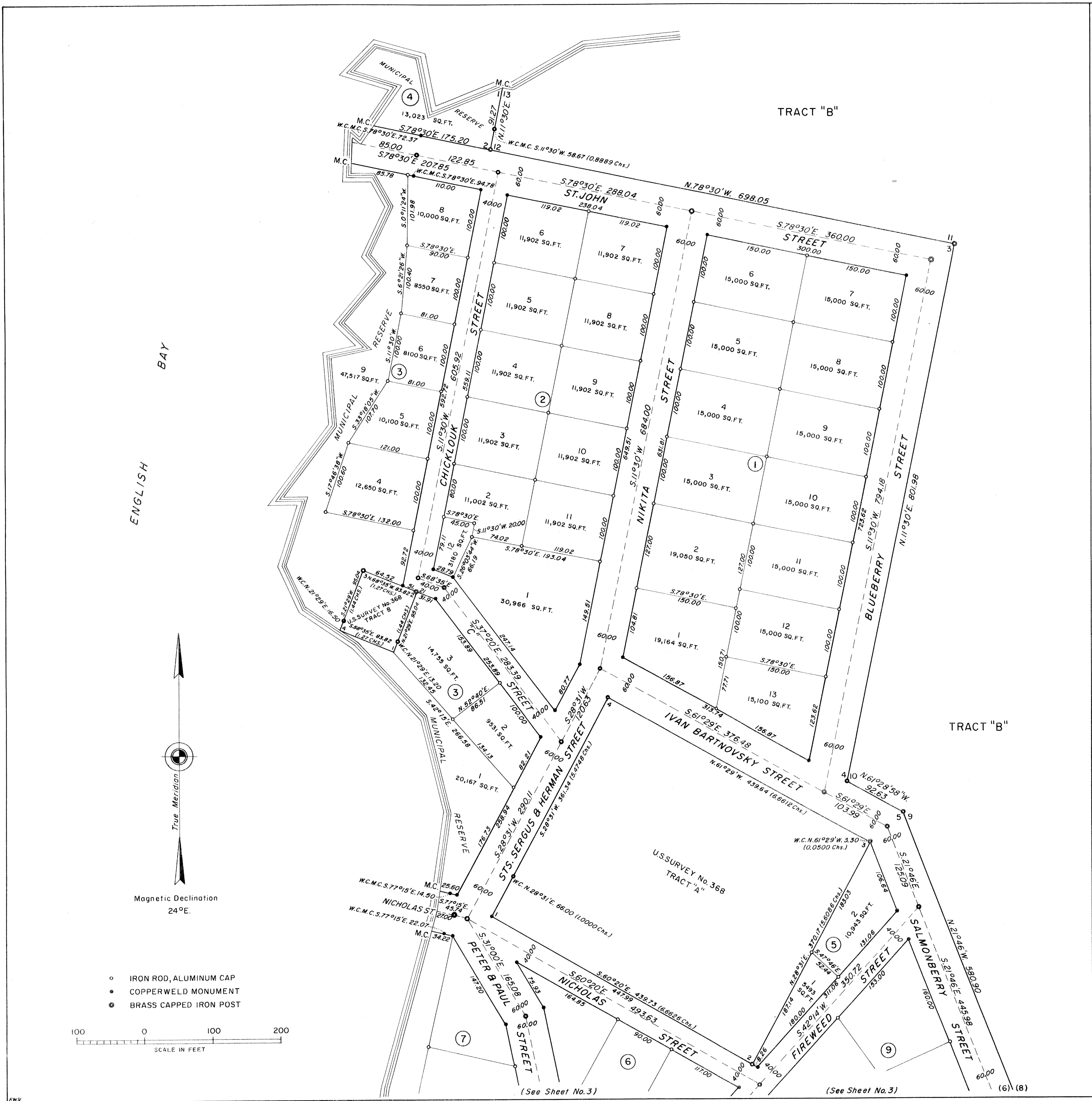
UNITED STATES DEPARTMENT OF THE INTERIOR  
BUREAU OF LAND MANAGEMENT  
Washington, D. C. April 1, 1971

This plat is strictly conformable to the approved field notes, and the survey, having been correctly executed in accordance with the requirements of law and the regulations of this Bureau, is hereby accepted.

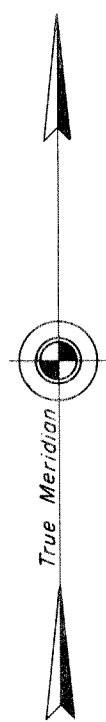
For the Director

*Clark F. Lumm*

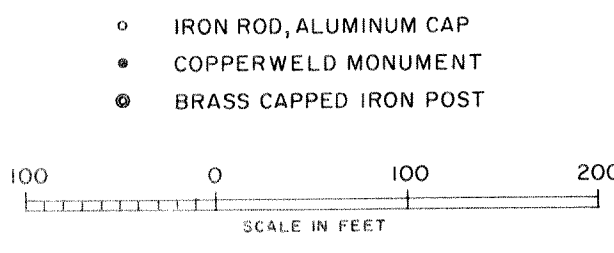
Chief, Division of Cadastral Survey



ENGLISH BAY



Magnetic Declination  
24°E.



(See Sheet No. 3)

(See Sheet No. 3)

(6) (8)

U. S. SURVEY  
No. 4901, ALASKA  
TOWNSITE OF ENGLISH BAY

Reference should be made to Sheet No. 1,  
for survey information.

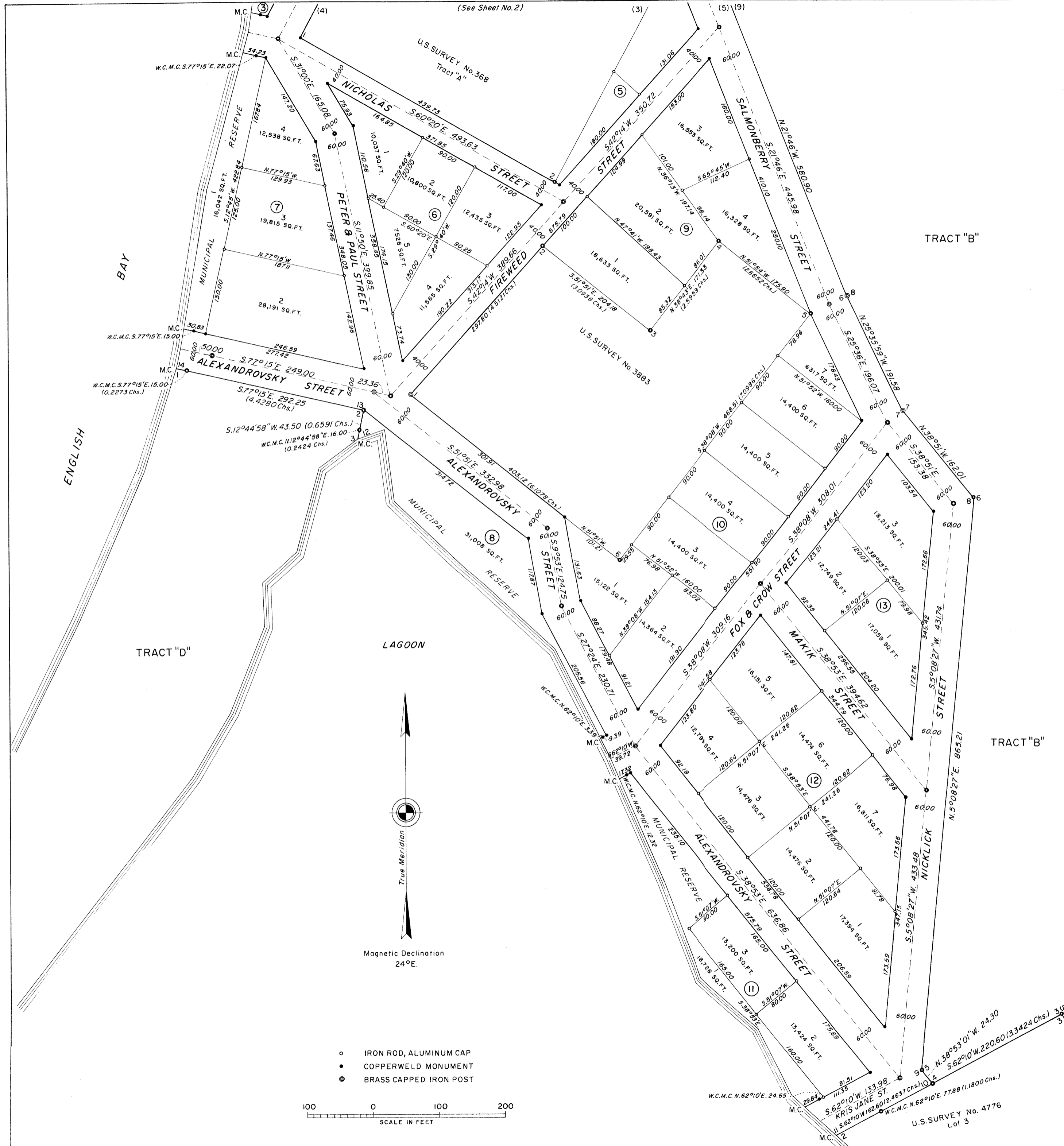
UNITED STATES DEPARTMENT OF THE INTERIOR  
BUREAU OF LAND MANAGEMENT  
Washington, D. C. April 1, 1971

This plat is strictly conformable to the approved field notes, and the survey, having been correctly executed in accordance with the requirements of law and the regulations of this Bureau, is hereby accepted.

For the Director

*Clark F. Shuman*

Chief, Division of Cadastral Survey



- IRON ROD, ALUMINUM CAP
- COPPERWELD MONUMENT
- BRASS CAPPED IRON POST



U.S. SURVEY No. 4776  
Lot 3

W.C.M.C. N. 62°10'E. 77.88 (11,1800 Chs.)

S. 62°10'W. 220.60 (3,3424 Chs.)

N. 38°53'01"W. 24.30

S. 62°10'W. 133.98

W.C.M.C. N. 62°10'E. 24.65

W.C.M.C. N. 62°10'E. 24.65

SELDOVIA

Serial No. 71-62

<del>RECORDED</del> - FILED	
Seldovia REC. DIST.	
DATE	July 14, 1971
TIME	2:30 P.M.
Requested by	Bureau of Land
Address	555 Chandler Street Anchorage - Ak.