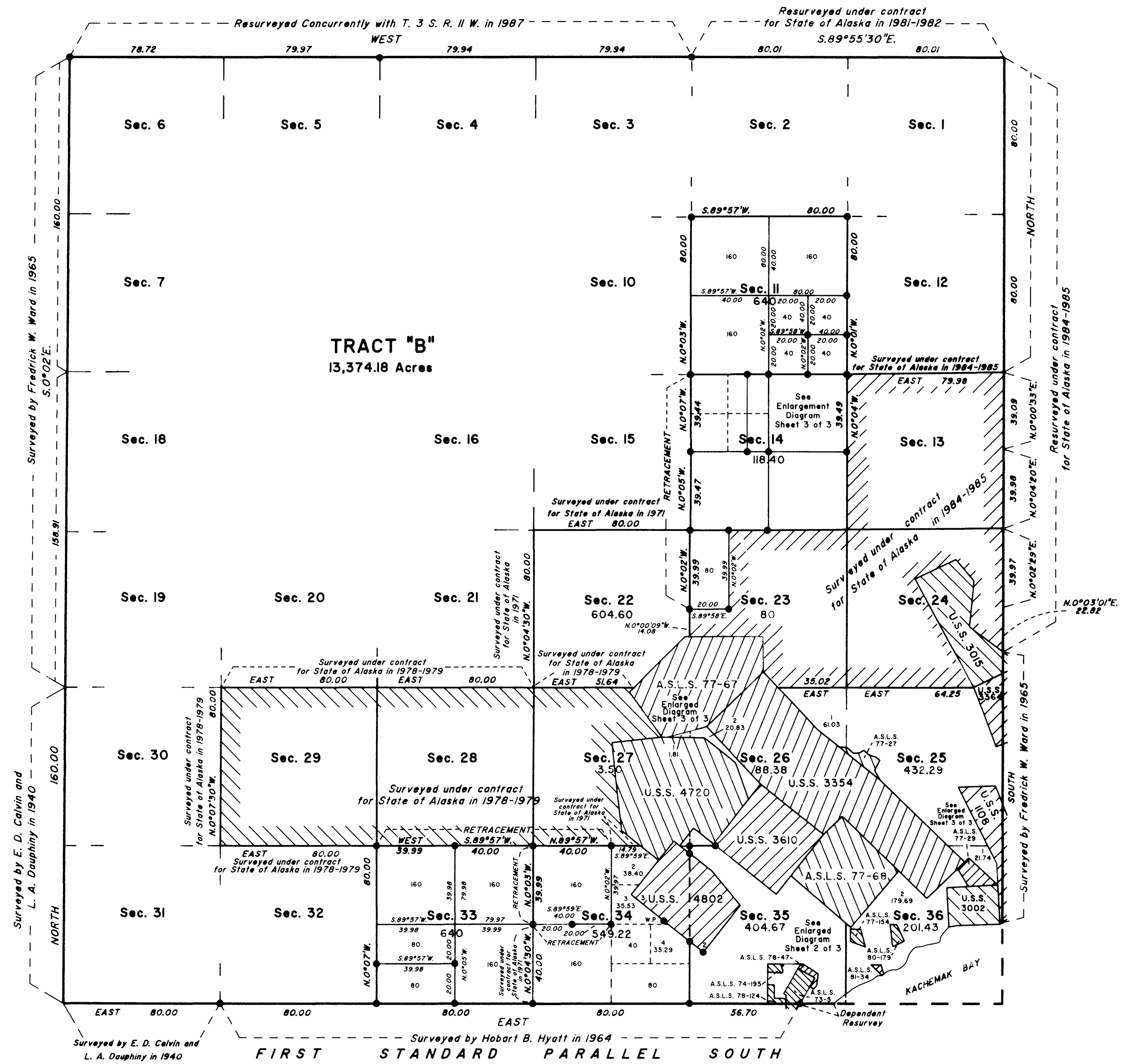


TOWNSHIP 4 SOUTH, RANGE 11 WEST, OF THE SEWARD MERIDIAN, ALASKA

DEPENDENT RESURVEY AND SUBDIVISION



The history of surveys is contained in the field notes.

This plat and the field notes represent the dependent resurvey of a portion of the First Standard Parallel South through a portion of Township 4 South, Range 11 West; the retracement of a portion of the subdivisional lines; and the survey of a portion of the subdivisional lines of Township 4 South, Range 11 West, Seward Meridian, Alaska. Areas shown on this plat are to facilitate conveyance of required lands.

This survey were executed by Richard T. Helm III, Cadastral Surveyor, May 18 through October 14, 1987, in accordance with the specifications set forth in the Manual of Surveying Instructions, 1973; Special Instructions for Group No. 411, Alaska, dated May 15, 1987, approved May 15, 1987; and Assignment Instructions dated May 18, 1987.

Acceptance of this survey does not purport to transfer any interest in submerged lands to which the State of Alaska is entitled under the Equal Footing Doctrine and Section 6(m) of the Alaska Statehood Act, P.L. 85-508, notwithstanding the use, location, or absence of meander lines to depict water bodies.

UNITED STATES DEPARTMENT OF THE INTERIOR
BUREAU OF LAND MANAGEMENT
Anchorage, Alaska

This plat is strictly conformable to the approved field notes, and the survey, having been correctly executed in accordance with the requirements of law and the regulations of this Bureau, is hereby accepted.

For the Director
Robert H. Anderson JUNE 1990
Date

Deputy State Director for Cadastral Survey,
Alaska

